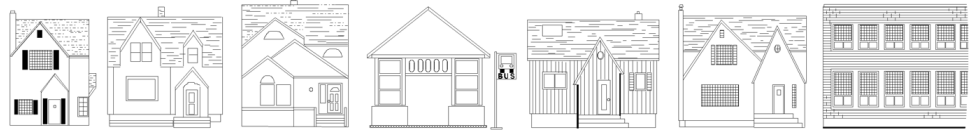


March
2020



THE McKernan Messenger

Since 1954 A publication of the McKernan Community League Circulation 1100

NOTICE OF OFFICIAL-TYPE MEETINGS!

Tuesday, April 7

Starting 7:00 p.m at the
community centre.

Annual General Meeting (brief!)

- Election of officers
(treasurer, secretary,
directors)
- Year-end business

Wine and Cheese Mixer (fun!)

Meet the executive, find out
how you can help, discuss
your concerns

Quieter streets on the horizon as council agrees to speed limit drop

The speed limit on residential roads in Edmonton will drop from 50 km/h to 40 km/h next spring after a March 11 vote at city council.

Councillors have been looking for some time to reduce speeds on quieter streets, and have been examining two proposals: a consistent 40 km/h limit and a separate proposal for 30 km/h in residential streets in a core area, which would have included McKernan.

Proponents of a slower 'core zone' argued that a reduction to 30 km/h would mean further reductions in injuries and deaths from motor vehicle accidents, as survivability goes up as speeds go down. Police, however, argued that enforcement of the lower limit would be too difficult.

The cost of installing the required 5,500 signs is pegged at \$2.5 million.

The new speed limit will also apply to Whyte Avenue from 99 to 109 Streets, and on Jasper from 97 to 124 Streets.



Bike lanes on 110 St.: meeting

Further discussion about proposed 110 St. bike lane in McKernan/Garneau will be held Monday, March 30 at McKernan Hall (11341 - 78 Ave.) from 6 to 7:30 p.m.

Garneau neighbourhood draft design event

This public engagement drop-in event will be held Tuesday, April 7 at St. Basil's Cultural Centre (10819 - 71 Ave.) from 4 to 8:00 p.m.

More information about these events will be going to the community in postcards next week, or check edmonton.ca/BuildingGarneau for further information as it is finalized.

AGM April 7: Treasurer, secretary, directors needed!

Our Annual General Meeting will be held April 7 at the Community Centre. The positions of Treasurer and Secretary are open for election, along with two of the director-at-large positions, for a two-year term. The league's hardworking treasurer Jennifer Branch-Mueller will be stepping down from the board at the end of her term in April 2020. As the treasurer is a key position for the board, we in particular need for a community member to take over.

Duties:

Treasurer: Deposits fees and income paid to the league; presents a detailed account of revenues and expenditures at every Board and General Meeting; prepares and presents an audited financial statement at the Annual General Meeting.

Secretary: Keeps minutes of the league, the Board and the Executive Committee, sends notices of meetings, and manages the Board correspondence.

Director-at-large: Attends meetings of the league and the Board, and carries out League business as required.

If you are interested in any of these positions, please contact Roberta Franchuk (president@mckernancommunity.org).

Other volunteer areas available includes crime and safety issues, transportation, Central Area Council of Community Leagues, historian, pub night organizer and hall sign maker. Drop by the AGM, vote for the board, and share your ideas with other league members.

Kids and Youth Programs

X-Treme Action Summer Full Day Camp

Do you like to live on the edge? Do you like challenges and action? Then this camp is for you. Some of the exciting experiences you could take part in include wall climbing, laser tag, archery, and canoeing. This camp is for kids ages 8-12 and has up to four field trips.

www.edmonton.ca/activities_parks_recreation/camps.aspx

Registration opens March 10 for members of Move.Learn.Play, and March 11 for non-members. Find other neighbourhood camps or camps with arts, craft, hobbies, outdoors and more!

July 27 - July 31

McKernan Community Centre
(11341-78 Ave.)

Rent the community centre for your event!

The community centre, located at 11341-78 Avenue, is open for rentals! Our beautiful facility includes smaller meeting spaces along with a refurbished hall complete with danceable floor and air conditioning. For future bookings, contact hall rental coordinator Darlene Dudley at hallrentalmckernancommunity@gmail.com. More information about the hall and how to rent it is available at www.mckernancommunity.org.

	Main hall	Meeting room	Boardroom
Capacity	151	60	16
Hourly cost			
Weekend (Friday evening, Saturday, Sunday)	\$75/hr	\$65/hr	\$25/hr
Weekday (day and evening)	\$55/hr	\$45/hr	\$25/hr
Long-term rentals (multi-week, with contract)	\$50/hr	\$40/hr	\$20/hr

*GST will also be charged on rentals

Residents of McKernan who are members of the community league receive a 15% discount on one-time hall rentals.

Damage deposit and key deposit may also be required. Events where alcohol is served require event insurance through the renter.



Community Contacts

PRESIDENT	Roberta Franchuk	780-431-4924 president@mckernancommunity.org
VICE-PRESIDENT	Nathan Mol	780-722-0086 vicepresident@mckernancommunity.org
SECRETARY	Agnieszka Matejko	780 438-1559 secretary@mckernancommunity.org
TREASURER	Jennifer Branch-Mueller	
DIRECTORS	Marilyn Johnson	
	Phil Kloc	780-965-0773
	Rekha Shepherd	
	Joyce Chung	780-909-2744
	--vacant--	
TRANSPORTATION	Housing committee	
HOUSING ISSUES	housingdevelopments@mckernancommunity.org	
	Mary Cox	
	cox.marylouise@gmail.com	
SCHOOL LIAISON	Michelle Jones	780-436-4134
SOCCER - Adult	Brad Odsen	bodsen@telusplanet.net
	Carley Haynes	
SOCCER - Youth	belmac@belgraviaedmonton.ca https://emsasouthwest.com/	
	C. Marathalingam	780-438-0460 www.ascacricicket.com
CRICKET	Greg Jones	780-222-2096
SKATING RINK	--vacant--	
SOCIAL CONVENOR	--vacant--	
HISTORIAN	Michelle Jones	780-289-0635 4ourpocketpark@gmail.com
POCKET PARK	Wiggert Hessels	780-432-6379
SOUTH CAMPUS LIAISON		

League Memberships

Memberships in your community league support programs, socials, hall activities, newsletters, and more; PLUS the League is looking out for your interests in housing, transportation, services and more. Memberships are \$35 for family or organizations, \$25 for single parent families. Single memberships with skating are \$20, seniors and students only \$10. A bargain! See the membership form at www.mckernancommunity.org.

MEMBERSHIPS Joyce Chung 780-909-2744
mckernanmembership@gmail.com

McKernan Messenger

The McKernan Messenger is published ten times per year. Advertising deadline: 1st of the month.

NEWSLETTER CONTENT Roberta Franchuk 780-431-4924
newsletter@mckernancommunity.org

DISTRIBUTION Cherie Hoyles

www.mckernancommunity.org

WEBSITE MANAGER Nathan Mol
webmaster@mckernancommunity.org

City of Edmonton

COMMUNITY SERVICES Kate Russell 780-496-5915
kate.russell@edmonton.ca

CITY COUNCILLOR Ben Henderson 780-496-8146
(Ward 8) ben.henderson@edmonton.ca

League notes March

Low attendance sinks Green Shack

McKernan's Green Shack program will not run this summer, as the City has tightened its criteria for the summer half-day play program based on attendance – and the McKernan program has had low attendance the last two years. The Green Shack will still run in almost all neighbouring communities, including Belgravia, Parkallen, Garneau, Queen Alex and Strathcona. This decision will be in effect for 2020 and 2021, but there is no word on if there will ever be an opportunity for McKernan to run the program after that date or what the criteria for inclusion would be.

This is a blow to families whose kids enjoyed the program, but kids 6-12 will still be able to attend the Green Shack in other communities. Hours for those programs will be available soon. And of course children of all ages can still enjoy McKernan, Gowan and Charles Simmonds parks all year round, with the water park in McKernan operating June-September.



MOVING? SPRING CLEANING?

Don't dump your garbage in the alley – bring it to our Big Bin Event

Sunday, May 3, 9 a.m. to 1 p.m.

McKernan Community Centre parking lot

There is no charge to drop off items but you **MUST** be a community league member (memberships will be available to purchase.)

Like us on Facebook:
McKernan Community
League

Follow us on Twitter:
@McKernanCL



Graffiti on rink shack

A variety of graffiti tags have appeared on the outside walls of the rink shack and will have to be removed. The rink team is looking into solutions that will not damage the mural, which was installed by the iHuman Youth Society in 2012. The presence of the mural has cut down quite a bit on graffiti, which used to be a regular problem on the building. However, taggers do still hit many places in the city and this is no exception.

MAZURKA MUSIC & ART SOCIETY PRESENTS

Chopin and the Dancing Ribbons

PIANO RECITAL & ART INSTALLATION

10TH ANNIVERSARY CONCERT OF MAZURKA MUSIC AND ART

ON PIANO
ZUZANA SIMURDOVA / BALLADES
MIKOLAJ WARSZYNSKI / POLONAISES

ART INSTALLATION
LIZ INGRAM
BERND HILDEBRANDT

MUTTART HALL
MACEWAN CONSERVATORY
10050 MACDONALD DRIVE
EDMONTON

MARCH 21ST, 2020 AT 7:30PM

*ADMISSION: REGULAR \$20
SENIOR \$15
STUDENT \$10

*Tickets at the Door
Or for more info call 780 700 3708

MAZURKAMUSICANDART.COM

Warm and supportive relationships with students of all ages

Focus on solid technical and musical foundations

Introduction to improvisation and keyboard harmony

Students regularly awarded medals through RCM and Conservatory Canada, practical and theory

All ages and levels are welcome

A FUN PROGRESSIVE APPROACH with students of all ages.

NEW: Now also "Teaching KIDS to SING!!!"
(kids of ALL ages that is)

Contact for registration @ 587.983.0292
www.edmontonpianoteacher.com

Community briefs



A home for your furniture

Moving in the spring? Don't want to haul that old dresser away with you? Donate your gently used household furnishing and home electronics to Find. Find participates in the Housing First Support Program by providing furniture to individuals and families who are transitioning out of homelessness. Drop items off at 5120 122 Street or call 780-988-1717 for pickup. Visit findedmonton.com for a list of accepted items or to fill out a donation request form.

Elm tree pruning

March is the last month in which you can prune healthy elm trees on private property. This restriction is to reduce the potential for infection by Dutch elm disease, a deadly disease that can affect any elm tree that has destroyed millions of American elm trees across North America. The disease is caused by a fungus that can be carried by the elm bark beetle. It is a violation of the Community Standards Bylaw to store elm firewood or to transport any part of an elm unless it is to a disposal site, prune an infected elm tree, or to prune between April 1 and September 30 in any year. Elm trees on boulevards and other public areas are maintained by the City and crews do tree care in the late winter. If you see a public elm tree that has broken branches or looks unhealthy, report it by calling 311.

Some love for your older house

Heritage homes - age 50 and over - help give Edmonton its unique character, and those who own such homes need to understand their special needs.

The City of Edmonton runs a series of low-cost workshops that will help owners protect their older or heritage home. The This Old Edmonton House workshops, which run from March until June, are led by professionals in their fields. Subjects include Windows and Doors, Millwork and Floors, Foundations, Plastering Walls and more. The workshops will be of special interest to homeowners, but those interested in architecture, design and renovation are also welcome.

For a full list of sessions, or to register, visit This Old Edmonton House. www.edmonton.ca/city_government/edmonton_archives/restoring-a-historical-resource.aspx?utm_source=virtualaddress&utm_campaign=thisoldhouse

Make McKernan litter-free

Each year, citizens, community groups and businesses band together to make Edmonton sparkle with the Capital City Clean Up. Free litter pick up supplies are available now at City Recreation Centres (including Mill Woods and Terwilligar), teachers can request supplies for their schools or residents can pick up free litter bags at public library branches to take the 15 to Clean Challenge to Clean Canada Together! See www.edmonton.ca/capitalcitycleanup or call 311 for info.

McKernan Playgroup MONDAYS

Our playgroup for parents, caregivers and little ones (ages 0-5) meets again! Join us on Mondays at the Community Centre from 9:30 to 11:30 a.m.

Bring a toy to share, if you want. Please make sure any snacks are nut-free!

PRELOVED TOYS NEEDED: Clean, nearly new preloved toys are also needed (suitable for young ones). Contact Mary at cox.marylouise@gmail.com if you have donations or questions.



Heather McPherson

Member of Parliament
Edmonton Strathcona

Contact my office for assistance with:

- Employment Insurance
- Old Age Pensions
- Income Tax
- Citizenship & Immigration
- Canada Student Loans
- Celebratory Messages

780-495-8404

10045 81 Ave T6E1W7



heather.mcpherson@parl.gc.ca

Follow on

Visit my website at www.heathermcpherson.ndp.ca



MUSIC LESSONS FOR KIDS!



- Are your Kids interested in playing Music?
- Are you looking for Fun and Engaging Music Lessons for Them?

Come and see us!
We will help YOUR Children grow the PASSION FOR MUSIC!

ELECTRIC & ACOUSTIC GUITAR
BASS and PIANO
LESSONS



Call Today → 780 637 0513
AND BOOK A FREE INTRO SESSION

Or Visit:
www.EdmontonGuitar.com

Development news

Updates on major (higher density) developments

Full descriptions of these major projects can be found in the February issue of the Messenger, or at the McKernan website at www.mckernancommunity.org/about-development. Applications that have been received by the city are listed at www.edmonton.ca/mckernan.

1. Rezoning of 11455, 11459 and 11461 University Ave. to RA8 – this proposal is still with the planners. A date for the public hearing of the bylaw rezoning has not been set.
2. McKernan Crossing (114 St. and University Ave.) – an open house for this development was held February 22 and was well attended. Comments from the community focused on concern about the potential impact of increased traffic on the community, and the increased height of the building over what is included in the Area Redevelopment Plan. This application has not yet been sent to the city.
3. Pinto Properties (78 Ave. and 114 St.) – this application for two car-free buildings adjacent to the LRT station has not still yet been officially received by the City, so details are still uncertain.
4. Copperblock (109 St. and University Ave.) – an open house for the development was held February 13. Community concern focused around the proposed extra height of the building and the need for significant stepback of height adjacent to existing single-family houses. The developer has said they are revising their proposal and expect to submit it later this month to the City.

Front garage development opposed

The League, through its Development Committee, has registered its opposition to a proposal for an infill house at 11159-73 Ave. to be built with multiple variances. The largest such variance is an attached front garage and front driveway, which is not allowed under the Mature Neighbourhood Overlay that governs development in several central mature neighbourhoods. In the past, front driveways could be grandfathered in if the previously existing house had one, but this was changed when the overlay was reviewed and revised in 2016. The other variances include reduced side setback, reduced site setback, and non-compliant projections into the setbacks. Overall this development was deemed to be too large and of a form that was not complementary to the neighbourhood. The decision on the development will be made by Planning in the next month, and any decision could be subject to appeal. The league will continue to monitor this.

Development applications (Feb. 1 – Mar. 6)

The list below covers permits that have been applied for in McKernan this month. Permits are under review unless otherwise noted. Complete information, including permit number and the name of the applicant, is available at the City of Edmonton mapping website maps.edmonton.ca > Development Applications. Requested and approved planning applications (i.e. for rezoning, not development) are listed at www.edmonton.ca/mckernan. If you have any questions about a project, contact housingdevelopments@mckernancommunity.org.

11151-77 Ave.	To construct interior alterations to a single detached house (main floor kitchen / dining room load bearing wall removal and replace with new beam).
11547-78 Ave.	To construct a semi-detached house with unenclosed front porches, rear un-covered decks (lot 13A: 4.88m x 3.05m, lot 13B: irregular shaped), secondary suites, walkout basement and side entrances.

Neighbours of infill survey coming

Neighbours of infill development will be soon be asked about their experiences, to collect information about the impacts of infill development on other properties. Led by a group of concerned residents from Parkallen, the survey will be used to push the City to strengthen its rule and enforcement in infill construction. While many infill projects progress without issue, some have had terrible consequences for neighbours, including foundation damage, wall collapses and damage. More information will be presented on the league's webpage and social media when the survey is ready.

Overheight garage suite approved

The Subdivision and Development Appeal Board (SDAB) has overturned a refusal of a development permit for a garage suite at 10925 University Ave that was constructed above the maximum height. At a ruling on Feb. 13, the SDAB approved the permit with the caveat that the building would have to follow the drawings and plans that were submitted to the city. No word is available on if this will require any substantial revision of the partially completed structure.



Dr Katherine Roche
General Dentist

10240-124 Street Edmonton,
Main floor Guardian Building
780-488-8977
www.guardiandental.ca



Patient centered - Evidence based - Environmentally Responsible

GOLBY F  MILY FARM

Community Supported Agriculture
Program 2020

Fresh, locally & organically grown produce
delivered weekly to your area.

First harvests will arrive late June to
beginning of July with the final harvests
arriving mid to late September.





Couples Share: \$325/season
Family Share: \$575/season

For more information, contact Brandon
(780) 802-8364  golbyfamilyfarm@gmail.com